

TETE ENGINEERING SA

COMPANY PROFILE 2021



INDEX

| | |
|--------------------------------------|-----------|
| WHO WE ARE..... | 2 |
| Our company..... | 2 |
| Our knowledge, our team..... | 3 |
| Our history..... | 4 |
| What we do..... | 5 |
| Installations & Technology..... | 6 |
| Our numbers..... | 8 |
| Income volume by business Unit:..... | 8 |
| HEALTH AND SAFETY..... | 9 |
| Our commitment..... | 9 |
| Our social responsibility..... | 10 |
| OUR PORTFOLIO..... | 11 |
| Our works..... | 11 |
| Our major clients..... | 11 |
| WHERE WE WANT TO GO..... | 12 |



WHO WE ARE

Our company



TETE ENGINEERING, S.A. is a Mozambican company*, originally founded by Mr. Carlos de Freitas, the general manager, who – with his +40 years of experience and vast knowledge of industrial maintenance on the mining and metallurgy business, in Portugal, Zimbabwe and Mozambique – developed a small workshop and built solid partnerships with the main local industries established in Tete, Mozambique, while providing superior quality solutions to his clients.

While the company grew its human and technological resources, it continued to garner prominence amongst the newly established **TOBACCO** and **COAL** industries in the region, which saw the company quickly launched towards an unexpected level of **RECOGNITION**, primarily on mechanical maintenance interventions and heavy-duty machining.

As the clients, and nature of their requests, became more demanding, **TETE ENGINEERING** developed an organization, created its processes, invested in its structures, and joined forces with a team of experienced technicians and leaders on; machining, boiler-making, pipe-making, steel erection, general maintenance and project engineering. Today, it boasts a workforce of up to +150 workers and has built up an enviable client portfolio to match.



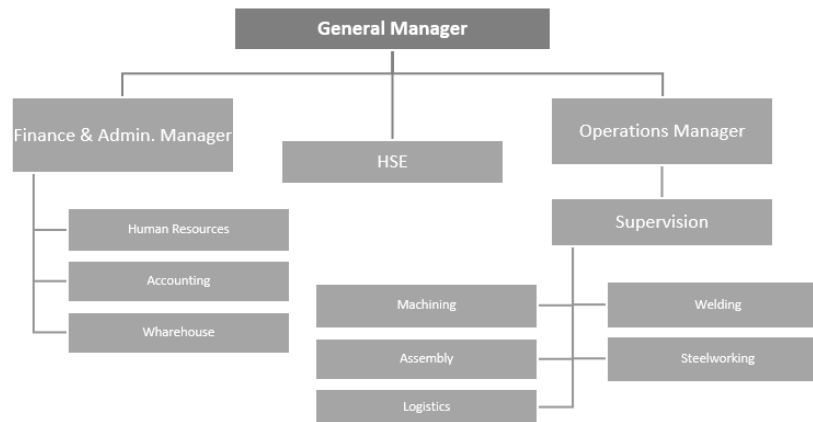
*Constituted by public deed on April six of Two thousand and nine - pages one hundred and twenty five to one hundred and twenty seven of the deed notebook number 4/A of "Cartório Notarial de Tete" (published on Boletim da República No. 16, Series III, of April 24, 2009) - and authorized to operate by indetermined time, to the intended activities – Mechanical Engineering, water vessel fabrication, metalworking, steel construction and others, according to commercial activity exercise on articles included on I, X (except planes), XI, XII e XVI, of the commercial activities licensing regulation.

Our knowledge, our team

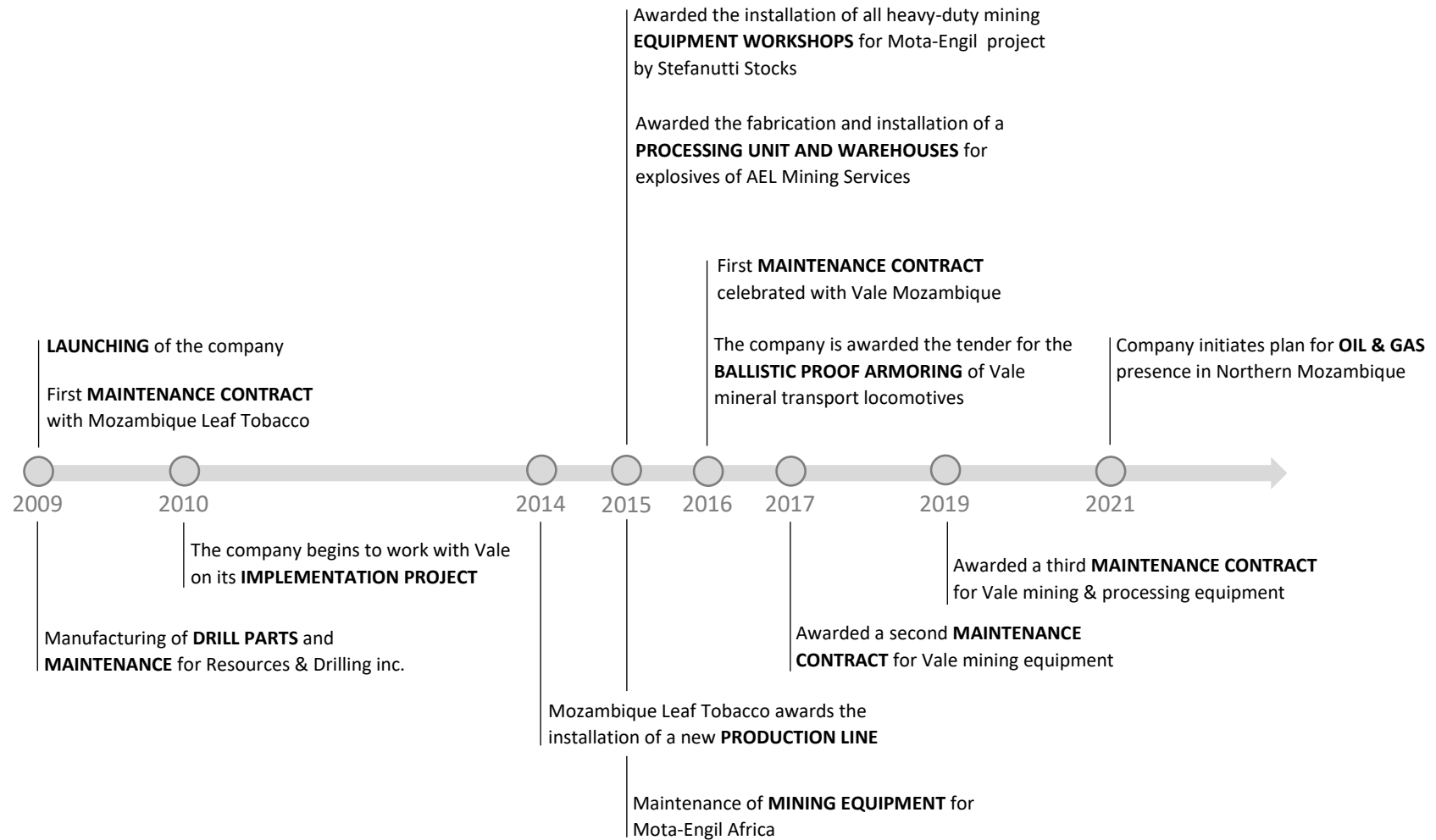


Our company is comprised of 100-150 workers and 5-10 external consultants, accordingly:

- 95% **MOZAMBICAN** professionals
- 5% **FOREIGN** professionals
- External consultants and partners:
 - Nupergo – Engineering and certification services
 - Spectrum Engenharia – NDT Services
 - Geographe – Mining parts and equipment's
 - ITM – Undercarriage equipment
 - Hardox / SSAB – Wear parts
 - Castolin Eutectic – Coating and welding specialists
 - Roger Boiler Making Services – Boiler making services



Our history



What we do



The **CORE BUSINESS** of the company is well identified and defined, accordingly:

- Project development for mechanical solutions (industrial)
- Supplying of products for wearing-off parts
- Industrial maintenance and refurbishment
- Light & Heavy-duty machining and on-site line-boring
- Steel structures & Pipping fabrication
- Steel erecting & assembling
- Mining equipment undercarriage rebuilds and parts supplier



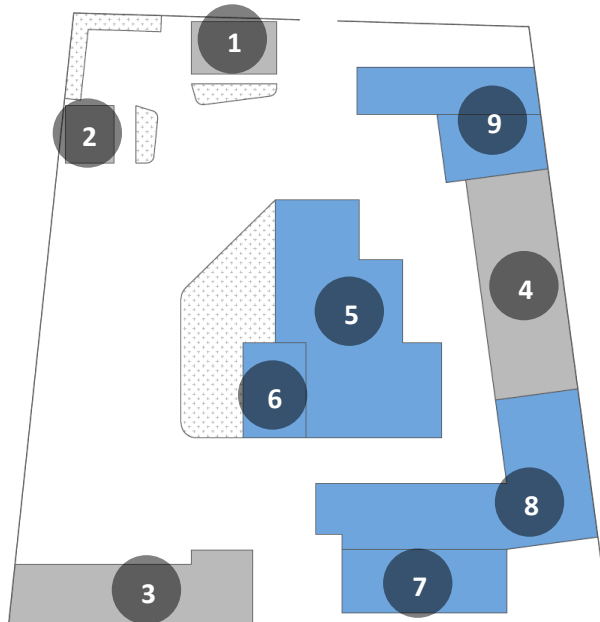
Furthermore, Tete engineering is the official **MOZAMBICAN DEALER** for:



Installations & Technology



The company sits on a 13 000 M² space, in Chingodzi, Tete-Mozambique, in which we have a total of 2 750 M² covered area.



1. Main offices
2. Technical offices
3. Workers quarters
4. Warehouse
5. Boilershop
6. Painting shop
7. Cutting shop
8. Machining shop
9. Mechanical auto



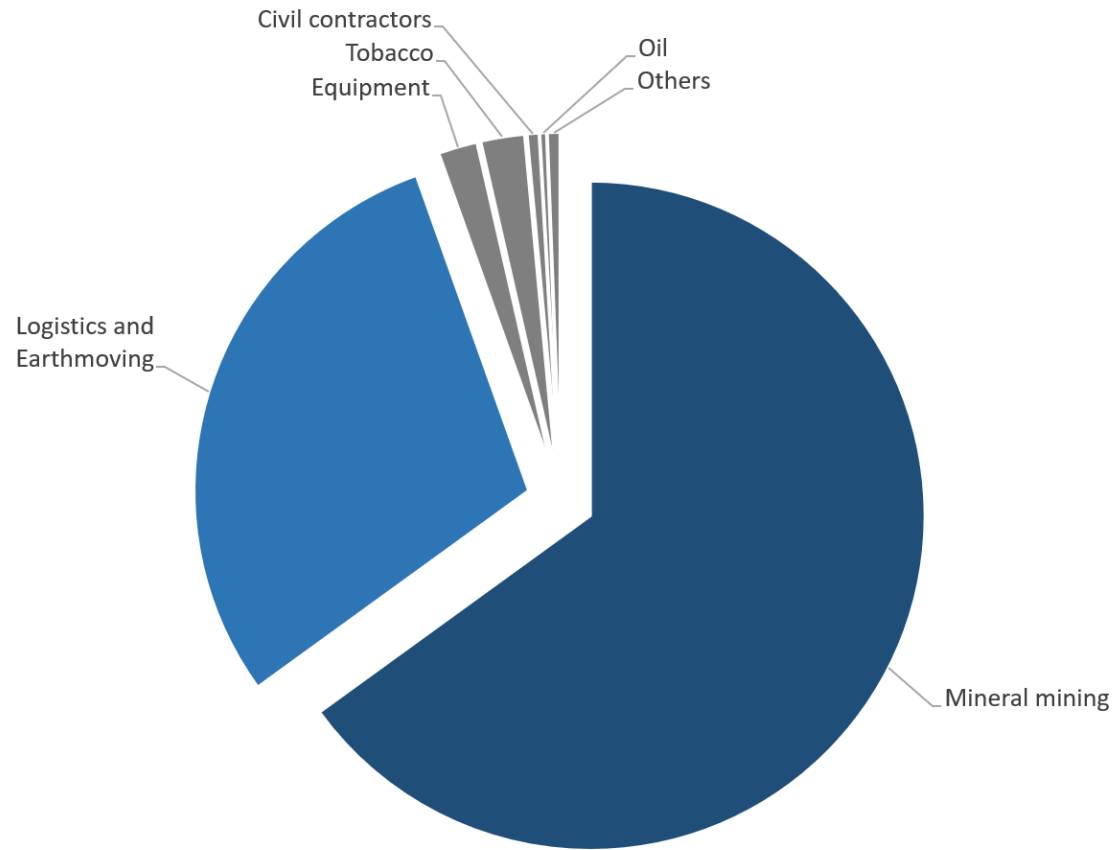
The company has invested on a number of **TECHNOLOGICAL RESOURCES** that set our quality and schedule compliance to ensure satisfaction amongst our clients, accordingly:

- Plate benders (up to 20mm) and Plate guillotines (up to 12mm)
- CNC plasma cutting machines (up to 25mm) and CNC oxi-fuel cutting machines (up to 200mm)
- Mechanical punching equipment
- Bandsaw cutting machines (up to 450mm)
- Plater roller machines (up to 60mm) and Section roller machines (up to 320mm)
- Round pipe bending equipment (up to \varnothing 100mm)
- Horizontal mechanical lathes (up to \varnothing 1200mm) and Vertical mechanical lathes (up to \varnothing 2500mm)
- Milling machines, Drilling machines and Line-boring machines (up to \varnothing 1500mm)
- Metric & Imperial thread opening machines and Fillet opening machines
- Pressing machines (up to 400T)



Our numbers

Income volume by business Unit:



HEALTH AND SAFETY

Our commitment

We undertake the responsibility of carrying out all works in accordance with legislation, standards, regulations and client definitions, always having **HEALTH & SAFETY** as our number one priority.

We take proficient action towards **ZERO** incidents with **RISK** management tools and **SAFETY** talks, along with social and environmental measures to reduce our footprint, as it is a part of our social responsibility. All of our staff is properly trained and oriented towards this goals, and daily briefings and safety talks take place in order to reinforce our commitment - In return, the company has had zero fatal accidents since the project first started.

All workers are subjected to medical examinations once a year, because we value the health and wellbeing of our workforce and aim to be conscientious of their health, raise awareness, and employ good safety and health practices within the company and the wider community. We believe it's an important aspect to creating familiar stabilization and aligns to our company goals.



Statistics 2020: **3 Incidents VS 2 Accidents**

Statistics 2021: **0 Incidents VS 0 Accidents**

YTD Records: **354 Days without Accidents VS 0 Deaths**

Our social responsibility



Besides our social commitment to the companies we work with, our workforce and their families, **TETE ENGINEERING** also collaborates with a number of social institutions on a monthly basis providing aid, and giving back to the community of Tete that most needs it. The main institutions are namely:

- **CREI** orphanage
- **CENTRO SÃO JOSÉ** orphanage
- **O MUNDO DOS MAIS PEQUENOS** orphanage



OUR PORTFOLIO

Our works



1. Line-boring of a Hitachi EX8000 sitch 2. Heavy-duty line-boring 3. Portable milling of a strut-face for a Caterpillar 793D mining truck 4. Fabrication of machined flanges 5. Refurbishment of a Caterpillar bucket holding arm 6. Reinforcement and re-lining of heavy-duty excavator buckets 7. Pipping and boiler-making fabrication 8. Fabrication of a 500T Silo cone 9. Refurbishment of a Caterpillar water-carrying vessel

Our major clients

Minerals: Vale Mozambique SA, Mota-Engil Africa SA, Moatize Mines LDA, Black Gold Resources LDA, Tayanna Mozambique SARL

Logistics & Equipments: Barloworld Equipments LDA, Tata Mozambique LDA, Transcrane Logistics SA, Kaltire Mozambique LDA, CLM Transports LDA, Hitachi Mozambique SA

Processing: Mozambique Leaf Tobacco LDA, Limbe Leaf Tobacco SA

Civil: Stefanutti stocks Ltd, WBHO corp., Aveng Mozambique LDA

WHERE WE WANT TO GO

We aspire to be the company of reference in the maintenance and metalworking business in Tete, central Mozambique, and in the upcoming projects associated to the **OIL & GAS** industry in the **NORTHERN** part of the country, through our continued commitment to offer high-quality services and products allied to our technological and intellectual qualifications, along with our values: Professionalism, competence, quality, dedication, confidentiality, reliability, transparency, responsibility, healthy, harmonious and fair competition.

As such, the company is now taking a step further into preparing itself for this new era Mozambique is entering and is now establishing **PROCEDURES** and **METHODS** towards a quality, safety and environmental **CERTIFICATION**.



Carlos de Freitas
(General Manager)

